



## HEAT MANAGEMENT SYSTEM (HMS) PACKAGE INCLUDES:

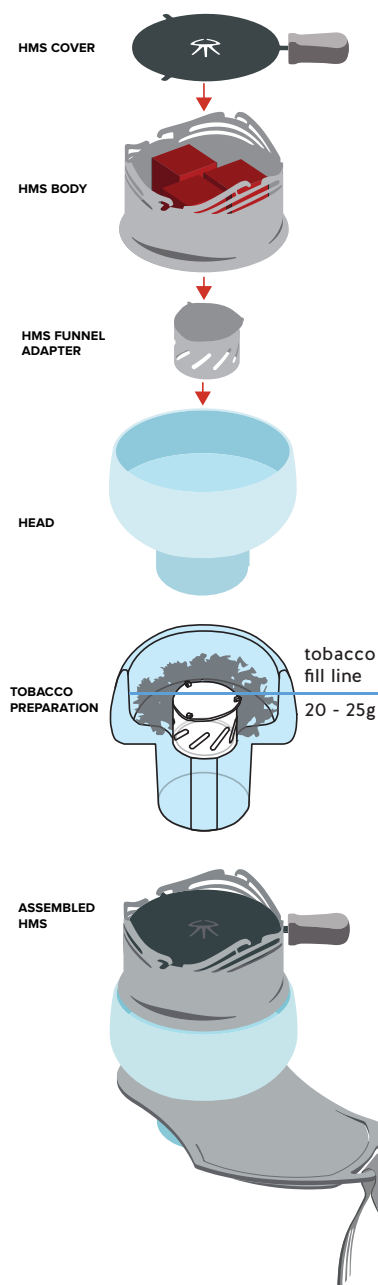
HMS body, HMS cover, HMS funnel adapter

## HOW TO PREPARE HMS AND CONTROL ITS TEMPERATURE

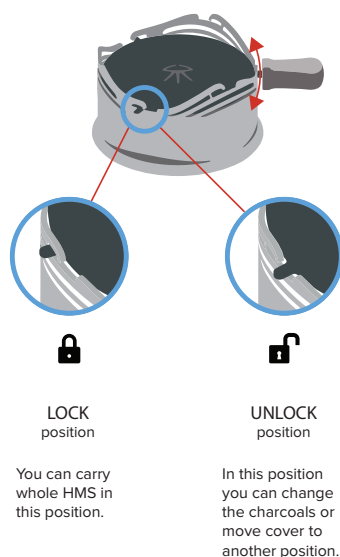
**! Before first use, fill HMS with hot charcoal and let it burn for 2 hours (don't use for smoking).**

1. Place your HMS body onto the head.
2. Place 2-4 pcs of burning charcoal (up to size 26x26x26mm ) inside the HMS body.
3. Put the HMS cover onto HMS body to A position.
4. Wait 5 minutes, until the HMS gets hot completely. Then you can start your hookah session.
5. If you want to change temperature you have to use position A, B or C. Or change amount of charcoal.

### SETTING - UP



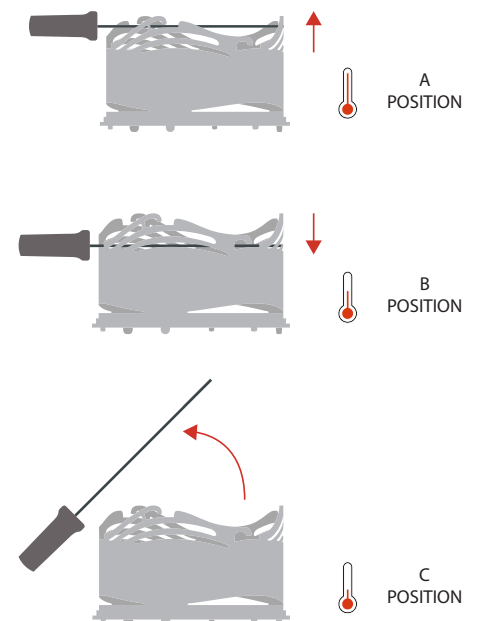
### LOCKING THE HMS



Place the HMS funnel adapter into the head and fill the head with shisha tobacco around it. Do not press the tobacco hard, but place it gently inside the head so that air will still be able to flow lightly throughout the tobacco mixture.

Place the assembled HMS on the head and make sure there is a gap 3—5 mm at least between the surface of tobacco and HMS, so that tobacco is not in contact with the bottom of the HMS body.

### TEMPERATURE REGULATION



### CAUTION! WHOLE HMS CAN BE VERY HOT!

Handle HMS only with the wooden grip that is part of the HMS cover.  
Always wash all parts manually.  
Do not use a dishwasher to get avoid of easy damage of the product!  
Do not put this product onto any device for heating up the charcoal.

